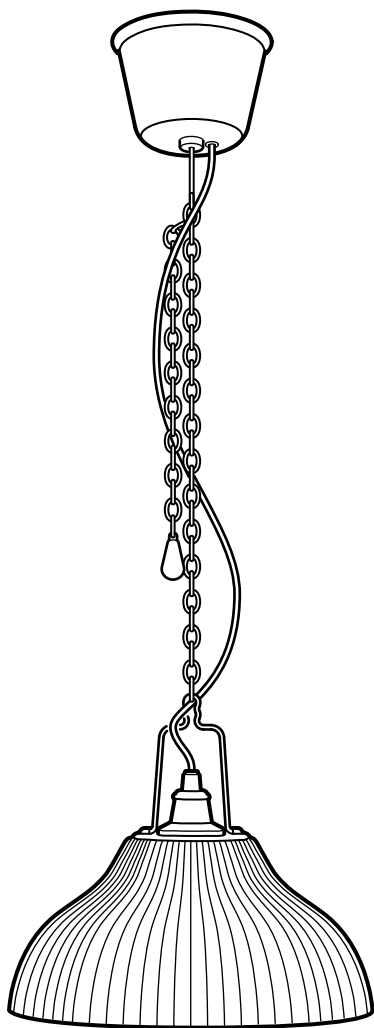


SUNNANÖ



Design and Quality
IKEA of Sweden



ENGLISH
INSTALLATION INSTRUCTIONS

CAUTION:

Before starting, turn off power at main circuit panel.

FRANÇAIS
INSTRUCTIONS D'INSTALLATION

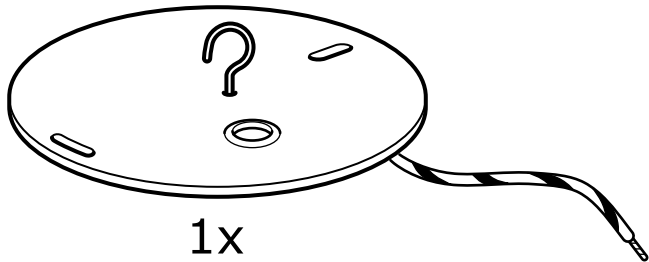
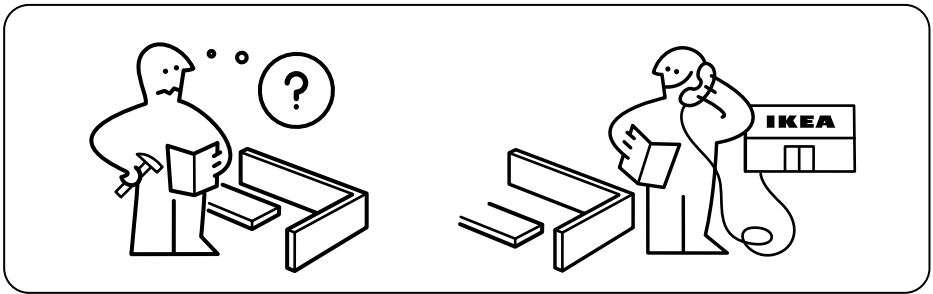
ATTENTION:

coupez l'alimentation avant de procéder à l'installation.

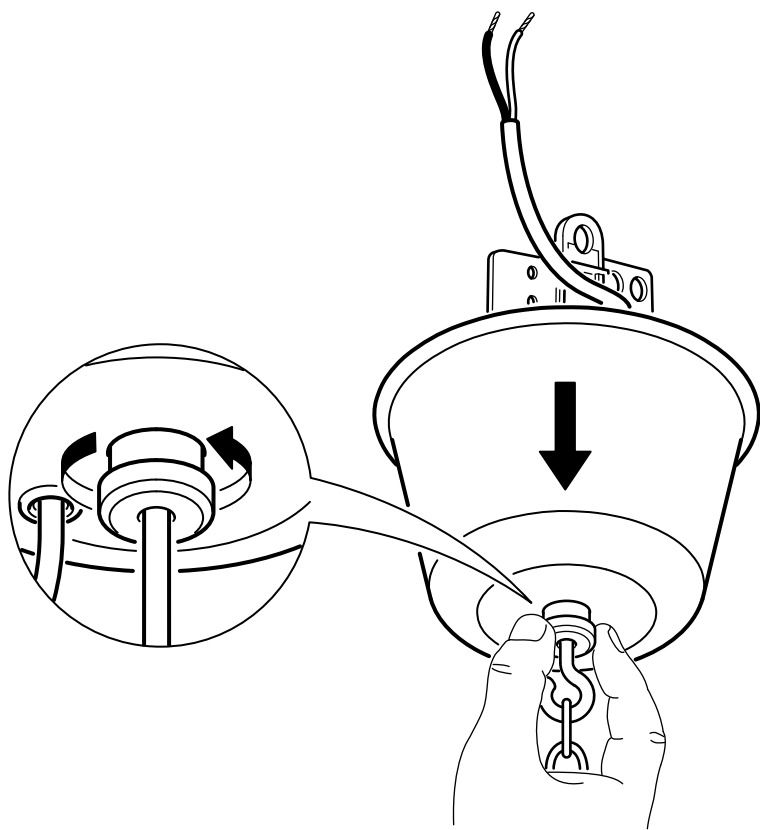
ESPAÑOL
INSTRUCCIONES DE MONTAJE

ADVERTENCIA:

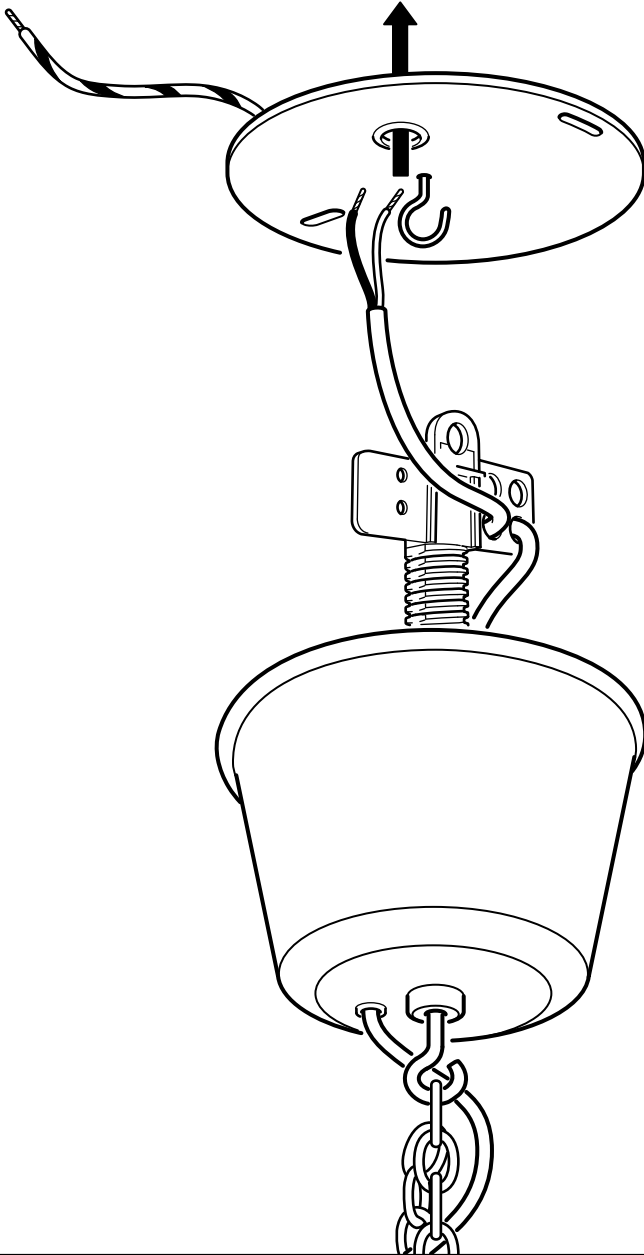
Antes de comenzar el montaje, cortar la luz en el cuadro general.



1



2



3



ENGLISH

Live

FRANÇAIS

Phase

ESPAÑOL

Con corriente

ENGLISH

Neutral

FRANÇAIS

Neutre

ESPAÑOL

Neutro

ENGLISH

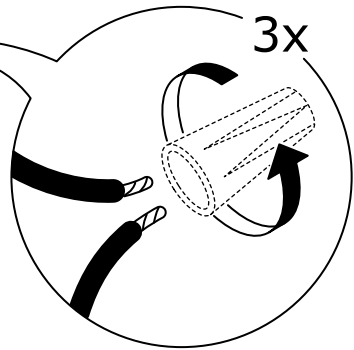
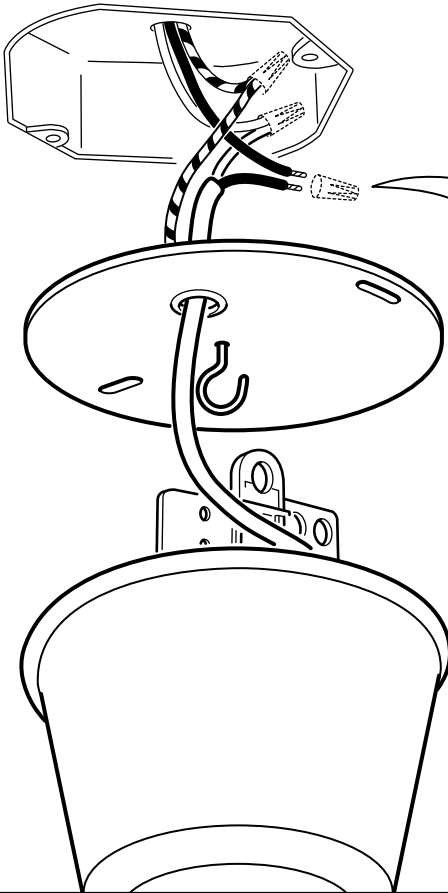
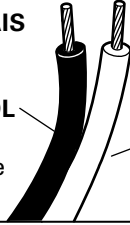
Earth/
Ground

FRANÇAIS

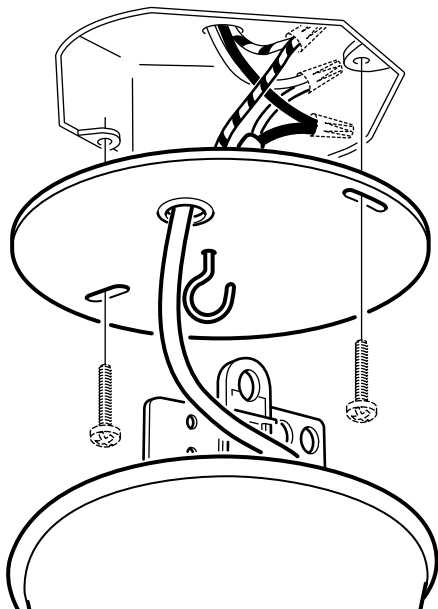
Terre

ESPAÑOL

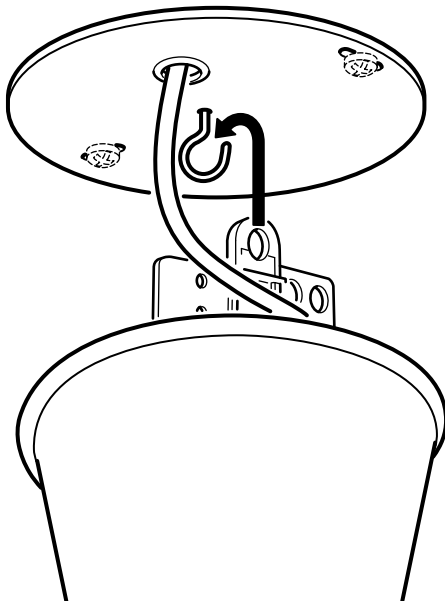
Tierra



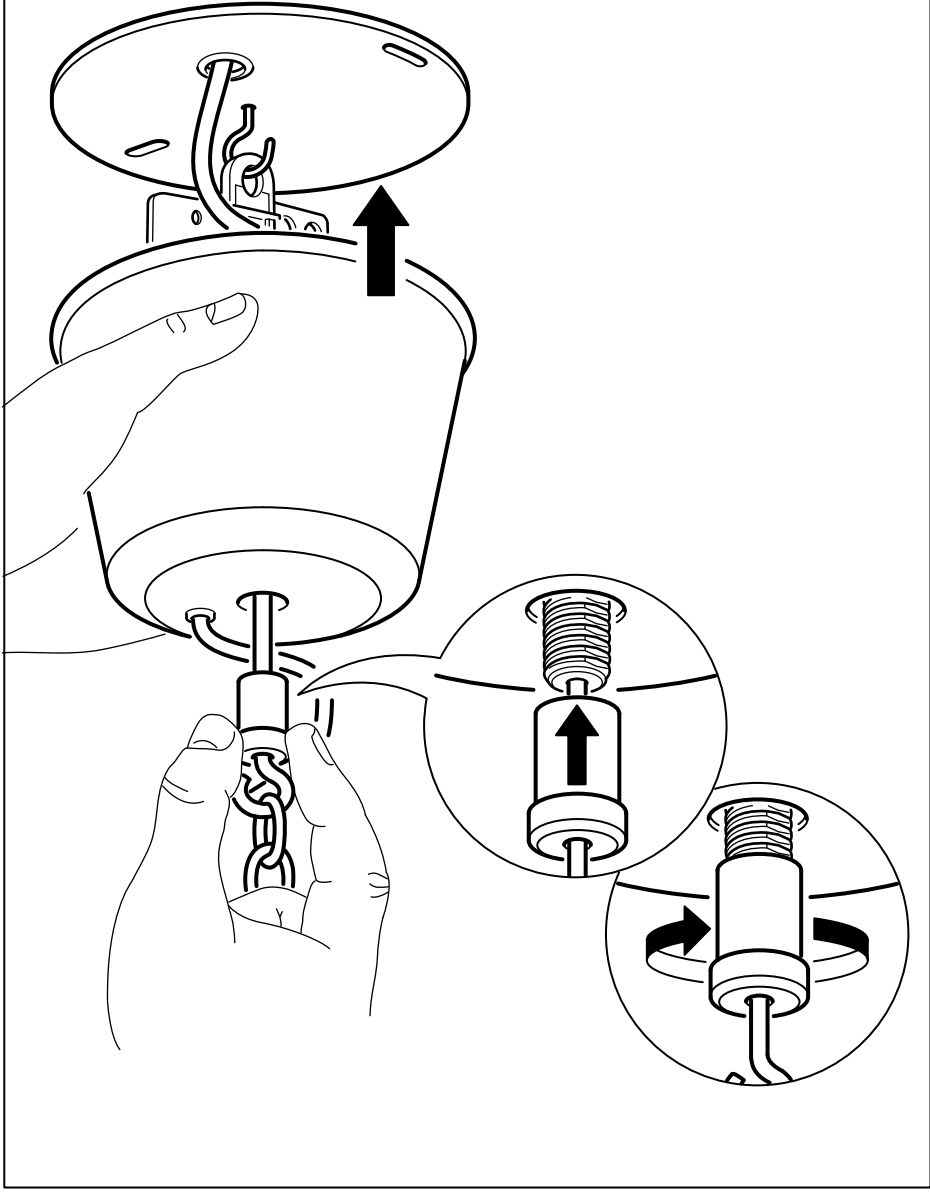
4



5



6





ENGLISH

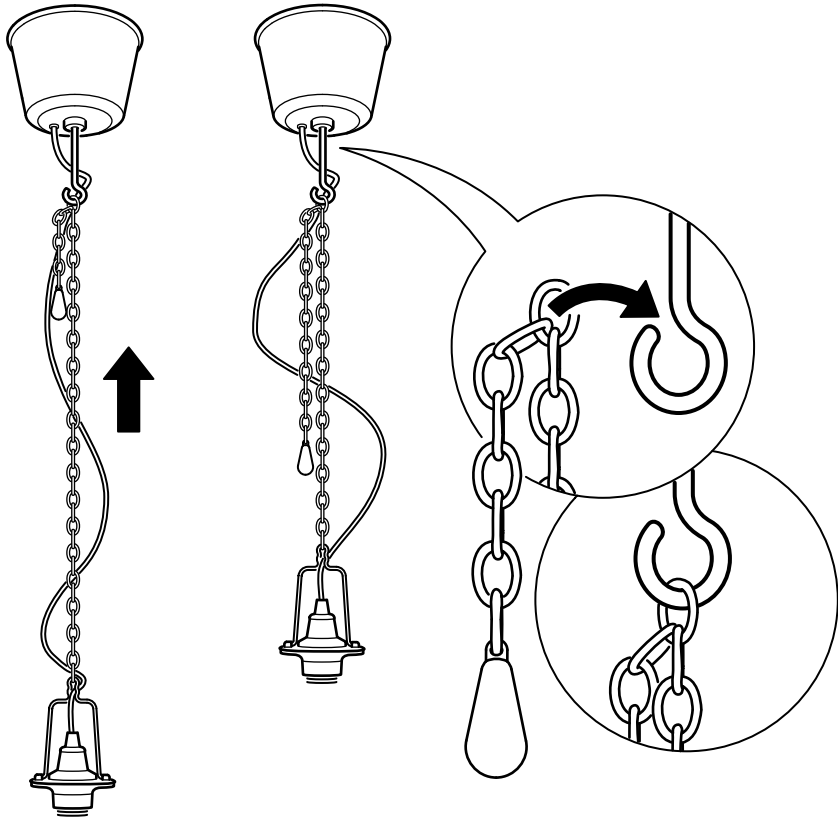
The weight of the lamp must be taken by the chain. When adjusting the cable make sure that it is longer than the chain.

FRANÇAIS

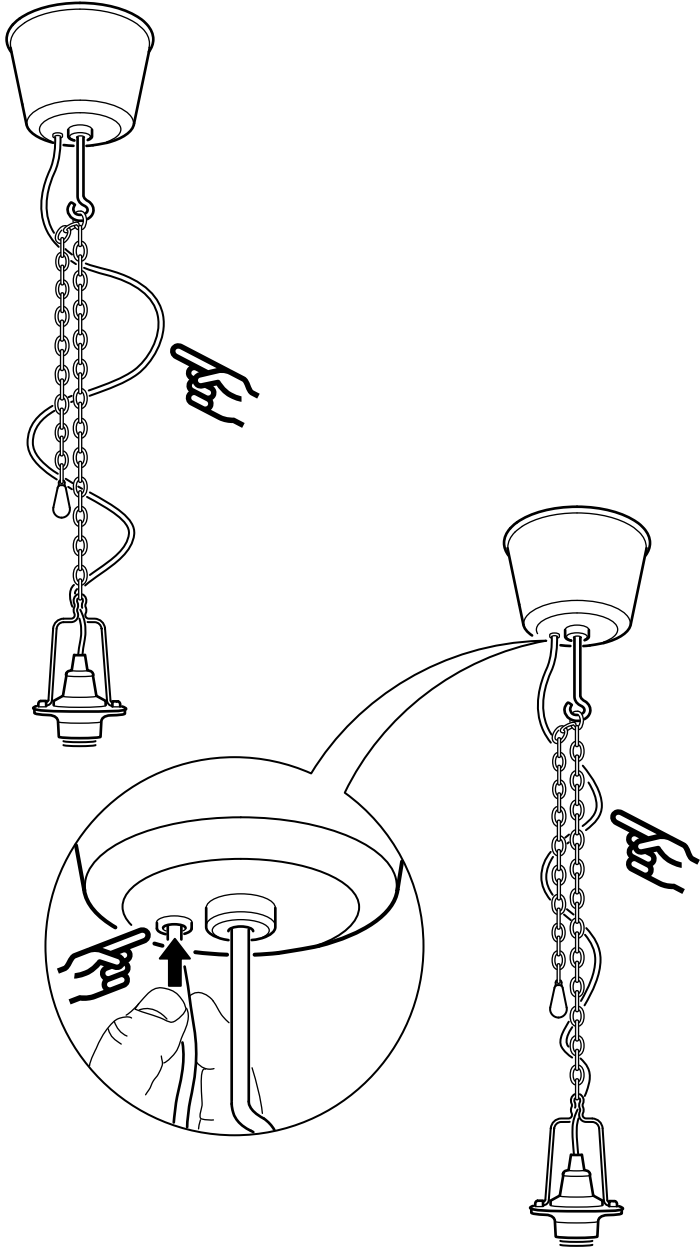
La chaîne doit supporter le poids du luminaire. Veiller à ce que la longueur du câble dépasse celle de la chaîne.

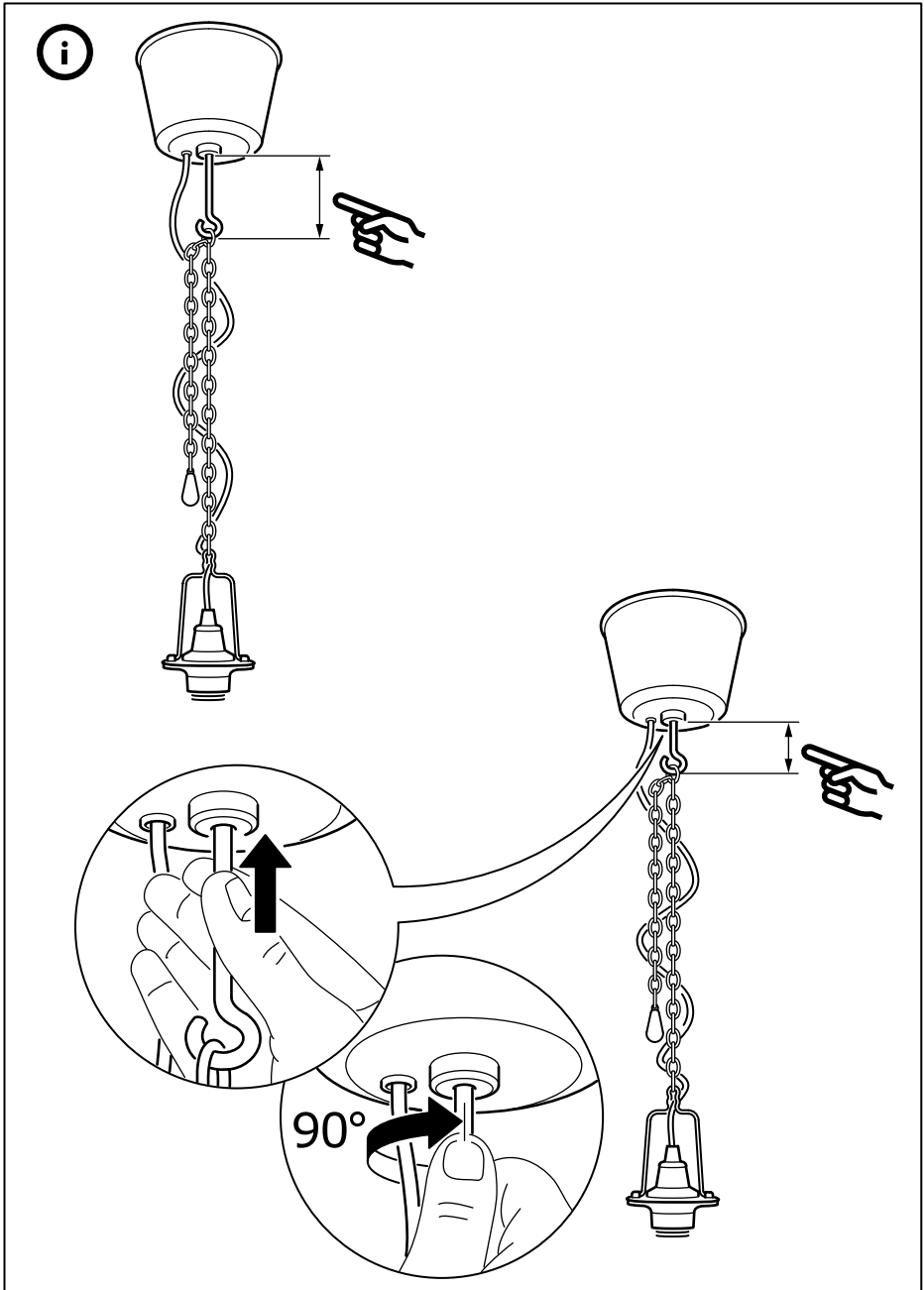
ESPAÑOL

El peso de la lámpara debe recaer en la cadena. Cuando ajustes el cable, asegúrate de que queda más largo que la cadena.

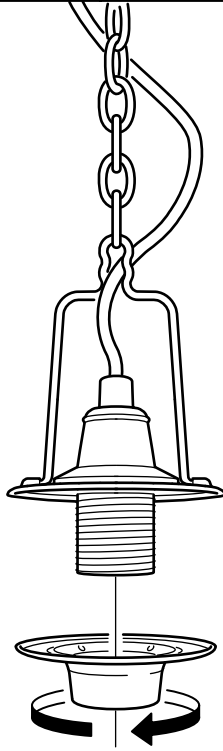


i





7



8

